



## FIBRE-NATURALI-SISAL-MAYATEX



### Breve descrizione del prodotto

#### Sisal Mayatex

Pavimentazione in sisal naturale ideale per tappeti e zona notte, capace di rendere accoglienti e caldi i vostri locali.

#### Caratteristiche tecniche

Composizione: 100% sisal  
Peso: 2.200 gr/mq  
Altezza rotoli: 200-400 cm  
Supporto: lattice  
Spessore: mm 5,5  
Peso totale: 2.200 gr/mq

Reazione al fuoco: classe Cfl-S1

**SKU:** Fibre-naturali-Sisal-Mayatex | **Categories:** [Fibre naturali](#), [Pavimenti](#)

#### APLEM Srl

**Uffici e Showroom:** Viale E.Jenner 69/3 - 20159 Milano

**Telefono:** +39-02-6555151 - **E-mail:** info@aplem.it - **Web:** [www.aplem.it](http://www.aplem.it)

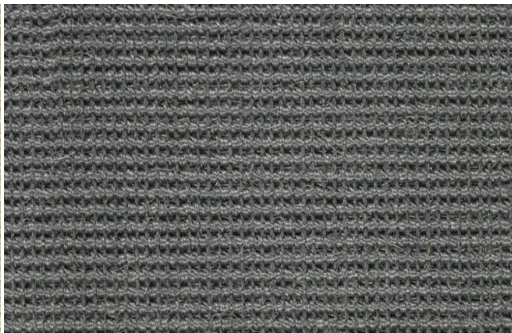




## GALLERY IMAGES



SISAL MAYATEX 10



SISAL MAYATEX 15



SISAL MAYATEX 16



SISAL MAYATEX 25



SISAL MAYATEX 29



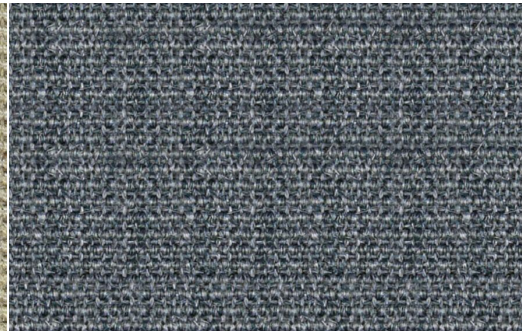
SISAL MAYATEX 31



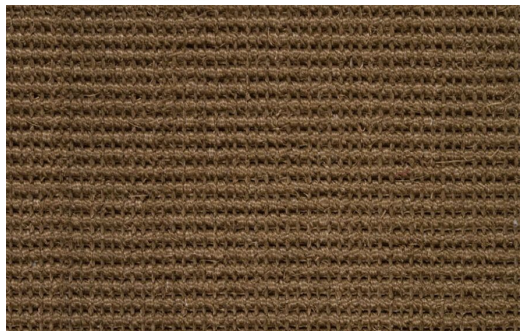
SISAL MAYATEX 45



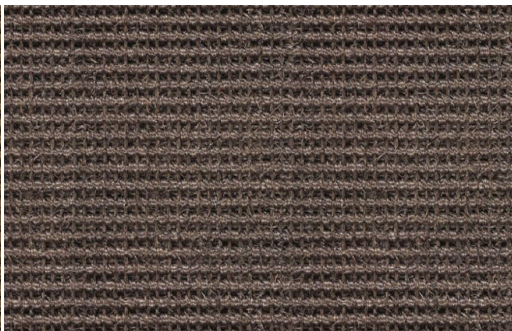
SISAL MAYATEX 60



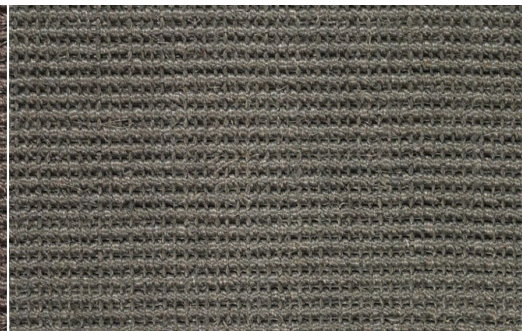
SISAL MAYATEX 70



SISAL MAYATEX 81



SISAL MAYATEX 91



SISAL MAYATEX 92

### APLEM Srl

**Uffici e Showroom:** Viale E.Jenner 69/3 - 20159 Milano  
**Telefono:** +39-02-6555151 - **E-mail:** info@aplem.it - **Web:** [www.aplem.it](http://www.aplem.it)





SISAL MAYATEX 99

**APLEM Srl**

**Uffici e Showroom:** Viale E.Jenner 69/3 - 20159 Milano  
**Telefono:** +39-02-6555151 - **E-mail:** info@aplem.it - **Web:** [www.aplem.it](http://www.aplem.it)