



## MOQUETTE-BOUCLÈ-AMBIENTE



### Breve descrizione del prodotto

#### Moquette Ambiente

Pavimentazione in moquette bouclè ad alto calpestio idoneo per uffici, retail e locali ad alto traffico

#### Caratteristiche tecniche

Costruzione tufting bouclè 1/10  
Composizione 100% poliammide  
Altezza rotoli: 400 cm  
Supporto: Juta sintetica  
Spessore totale: ca. 7,2 mm  
Peso filato: 700 gr/mq.  
Peso totale: 1.900 gr/mq.  
Reazione al fuoco: Bfl-s1

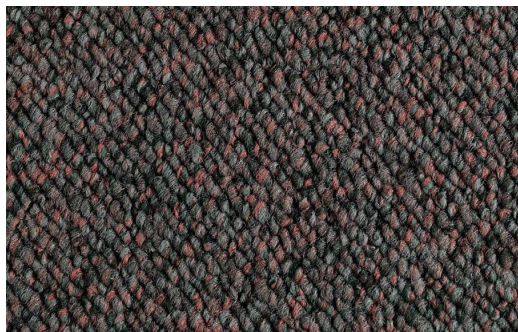
**SKU:** N/A | **Categories:** [Bouclè sintetici](#), [Moquette](#), [Pavimenti](#)

## GALLERY IMAGES

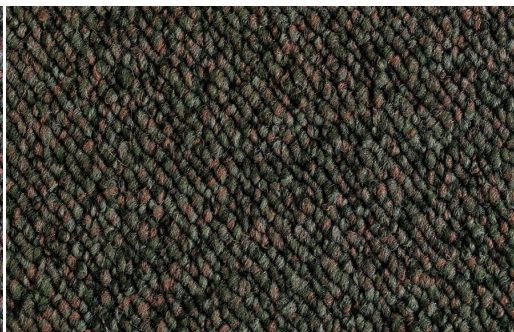
### APLEM Srl

**Uffici e Showroom:** Viale E.Jenner 69/3 - 20159 Milano  
**Telefono:** +39-02-6555151 - **E-mail:** info@aplem.it - **Web:** [www.aplem.it](http://www.aplem.it)

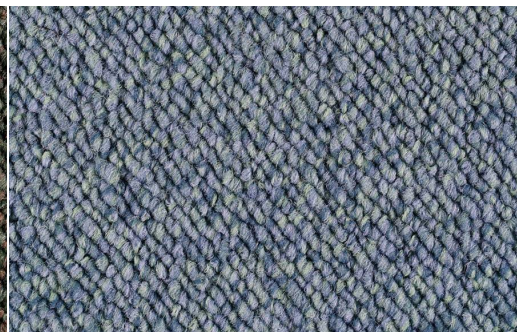




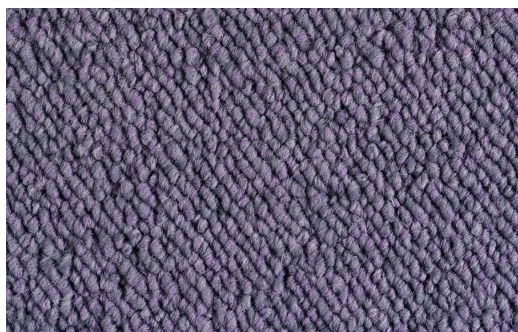
AMBIENTE 2001 AMAZZONIA



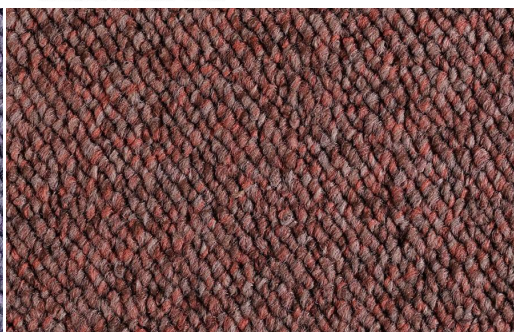
AMBIENTE 2002 TIMO



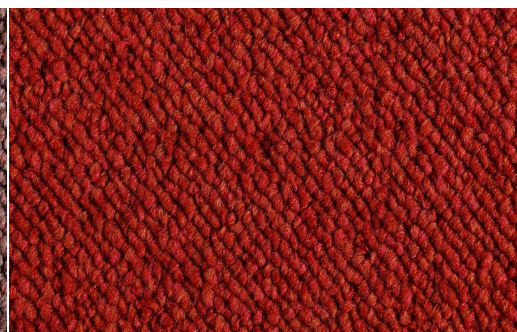
AMBIENTE 2003 BALI



AMBIENTE 2004 POLO



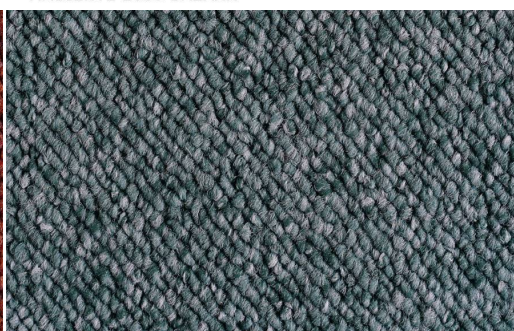
AMBIENTE 2005 BAZAAR



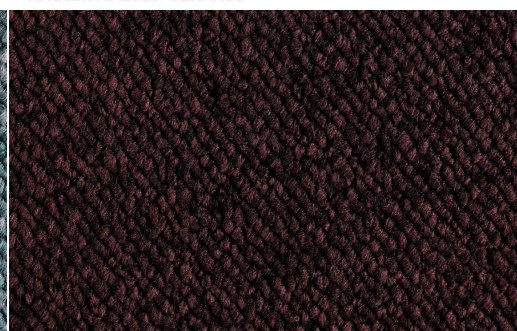
AMBIENTE 2006 GERANIO



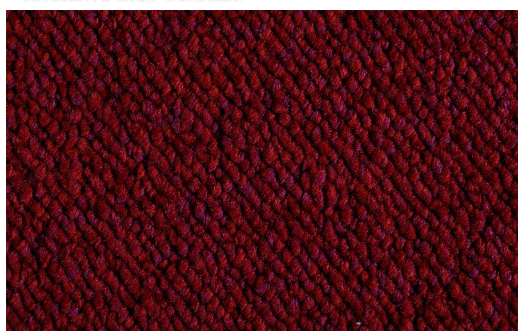
AMBIENTE 2007 CORALLO



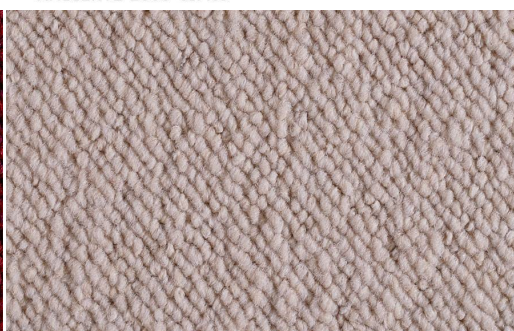
AMBIENTE 2008 CIPRO



AMBIENTE 2009 CACAO



AMBIENTE 2010 VINO



AMBIENTE 2011 SABBIA



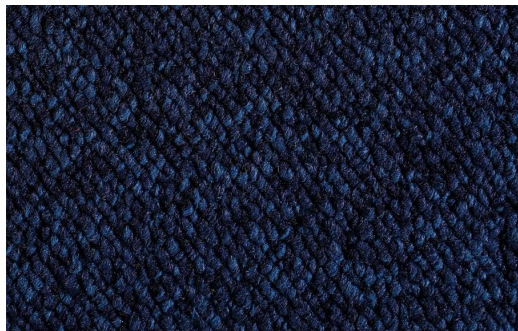
AMBIENTE 2012 MARZAPANE

**APLEM Srl**

**Uffici e Showroom:** Viale E.Jenner 69/3 - 20159 Milano

**Telefono:** +39-02-6555151 - **E-mail:** info@aplem.it - **Web:** [www.aplem.it](http://www.aplem.it)





AMBIENTE 2013 NOTTE



AMBIENTE 2014 VIMINI



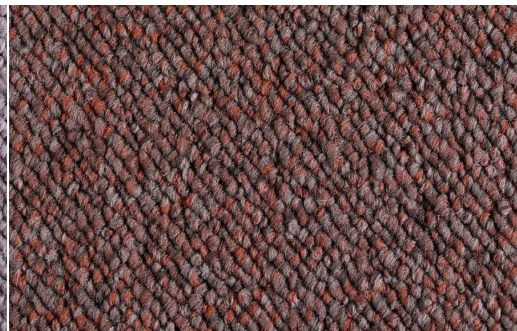
AMBIENTE 2015 PAVE'



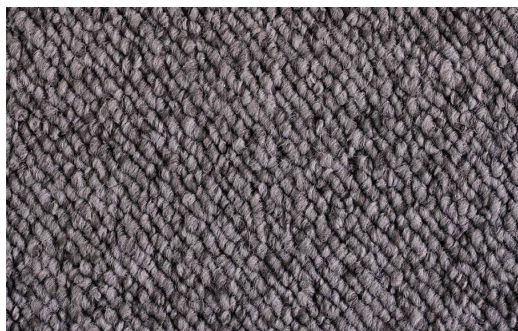
AMBIENTE 2016 SARDINA



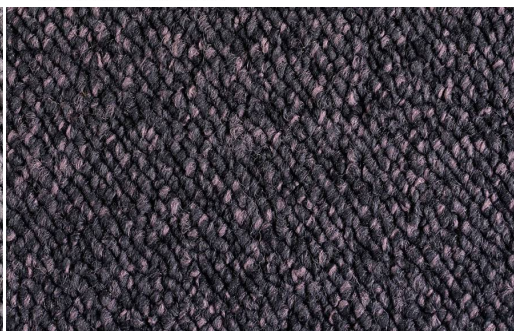
AMBIENTE 2017 GELO



AMBIENTE 2018 SCOGLIO



AMBIENTE 2019 GRANITO



AMBIENTE 2020 ONICE

**APLEM Srl**

**Uffici e Showroom:** Viale E.Jenner 69/3 - 20159 Milano

**Telefono:** +39-02-6555151 - **E-mail:** info@aplem.it - **Web:** [www.aplem.it](http://www.aplem.it)