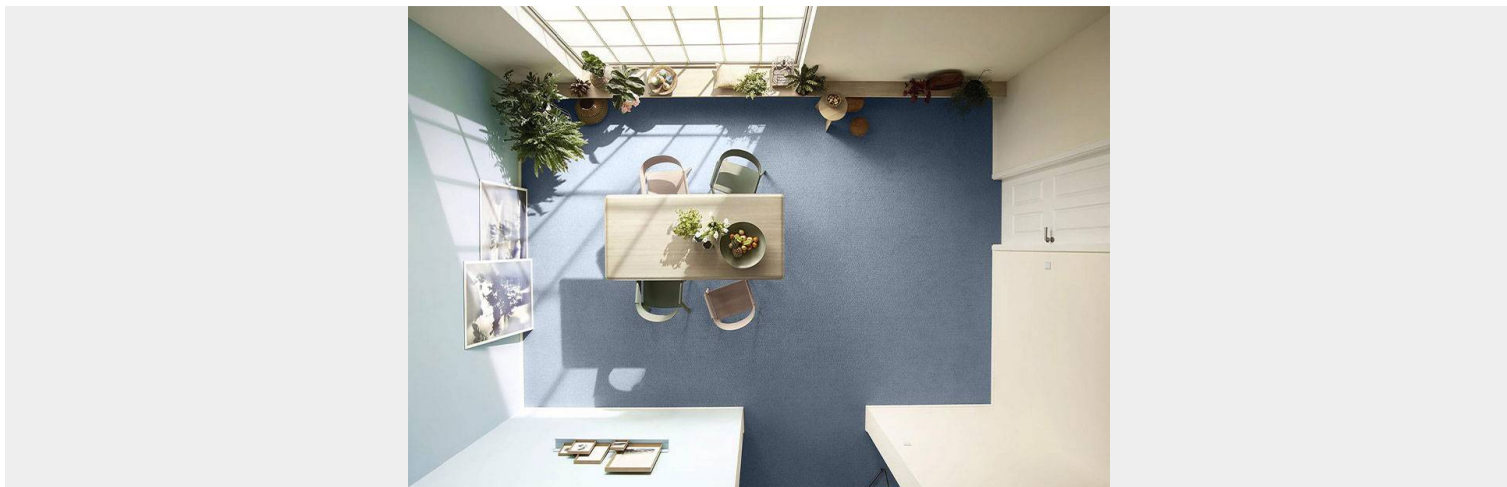




MOQUETTE-BOUCLÈ-RUSTICA



Breve descrizione del prodotto

Moquette Rustica

Pavimentazione in moquette bouclè ad alto calpestio idoneo per uffici, retail e locali ad alto traffico

Caratteristiche tecniche

Costruzione tufting bouclè 1/10
Composizione 100% poliammide 6.6
Altezza rotoli: 400 e 500 cm
Supporto: Texback Super
Spessore totale: ca. 8,3 mm
Peso filato: 640 gr/mq.
Peso totale: 1.830 gr/mq.
Reazione al fuoco: Bfl-s1

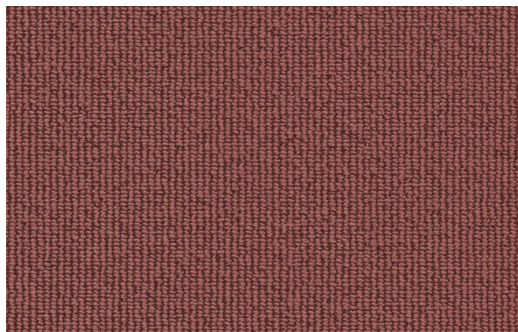
SKU: N/A | **Categories:** [Bouclè sintetici](#), [Moquette](#), [Pavimenti](#)

GALLERY IMAGES

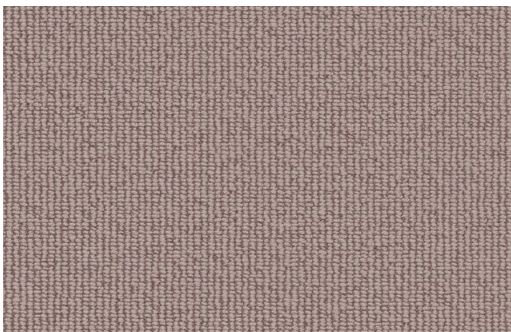
APLEM Srl

Uffici e Showroom: Viale E.Jenner 69/3 - 20159 Milano

Telefono: +39-02-6555151 - **E-mail:** info@aplem.it - **Web:** www.aplem.it



RUSTICA 1M33



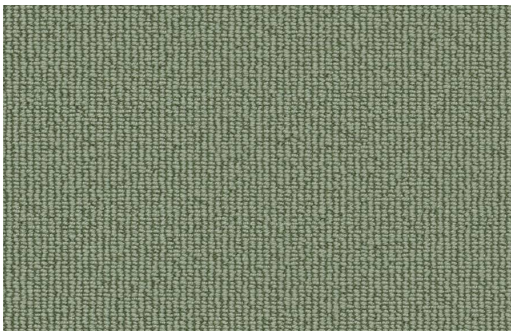
RUSTICA 1M34



RUSTICA 3N90



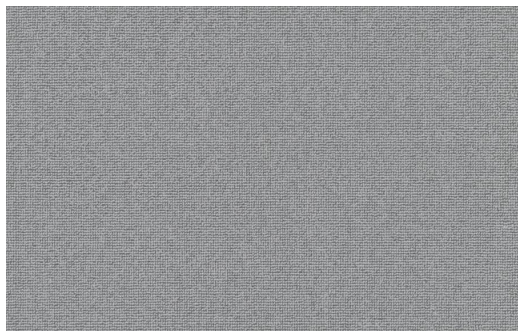
RUSTICA 3N91



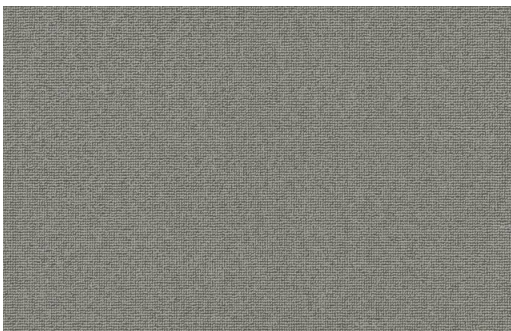
RUSTICA 4F93



RUSTICA 5V76



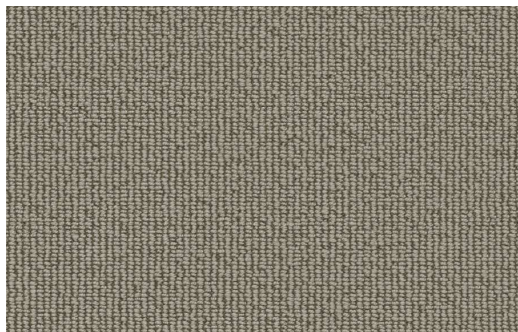
RUSTICA 5V77



RUSTICA 5V78



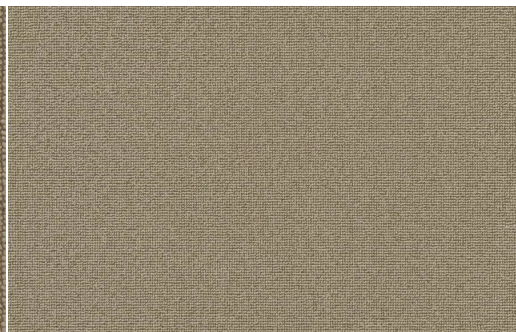
RUSTICA 6C62



RUSTICA 7G02



RUSTICA 7G03

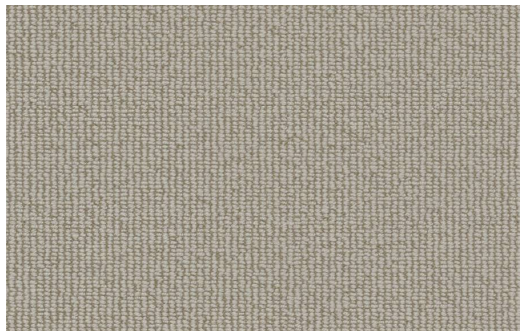


RUSTICA 7G04

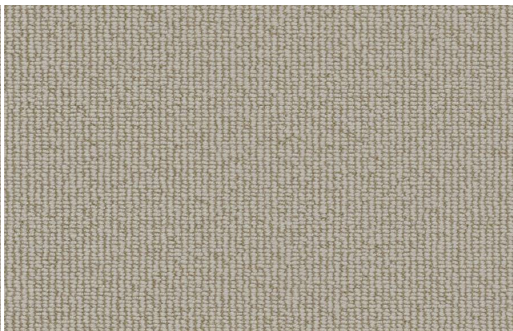
APLEM Srl

Uffici e Showroom: Viale E.Jenner 69/3 - 20159 Milano

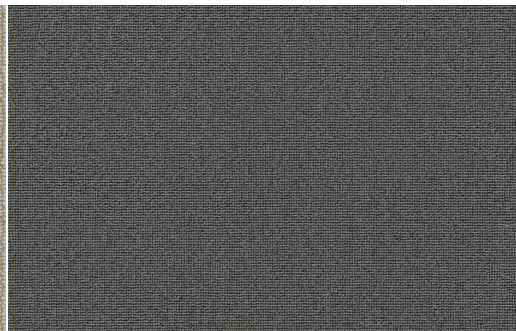
Telefono: +39-02-6555151 - **E-mail:** info@aplem.it - **Web:** www.aplem.it



RUSTICA 8J20



RUSTICA 8J21



RUSTICA 9F13

APLEM Srl

Uffici e Showroom: Viale E.Jenner 69/3 - 20159 Milano

Telefono: +39-02-6555151 - **E-mail:** info@aplem.it - **Web:** www.aplem.it